



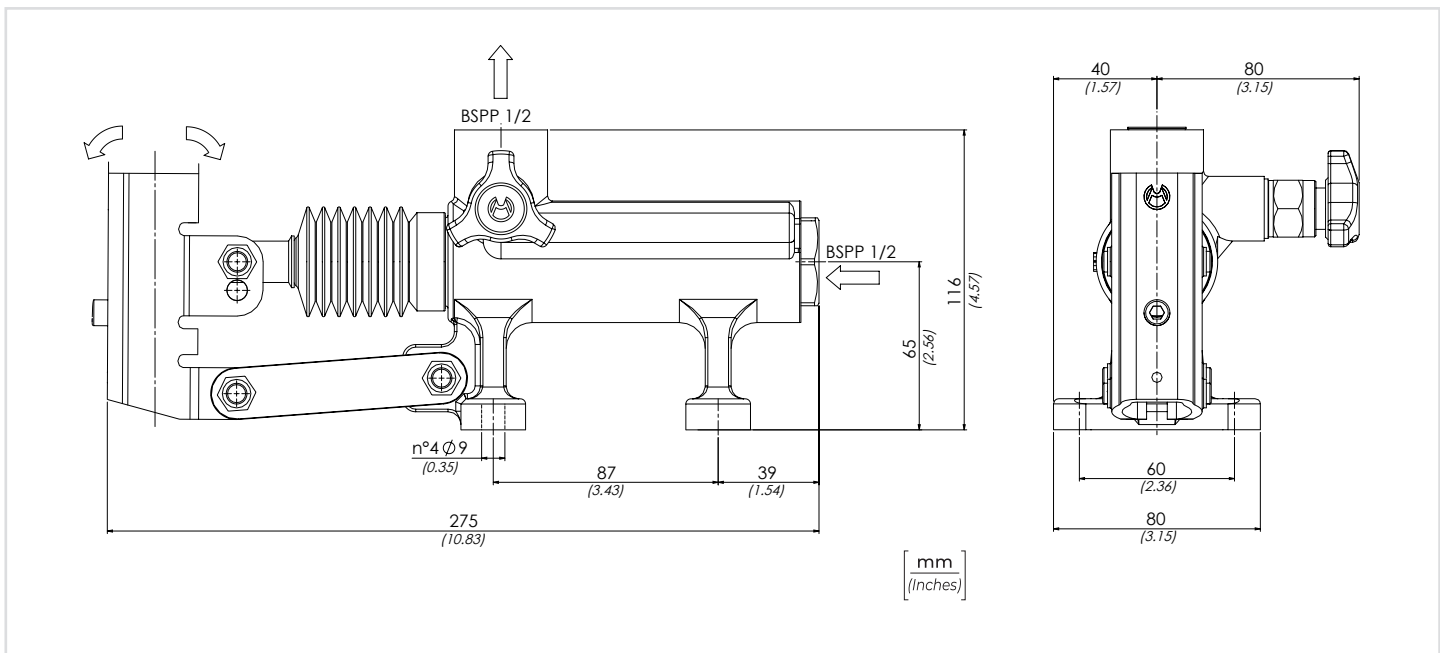
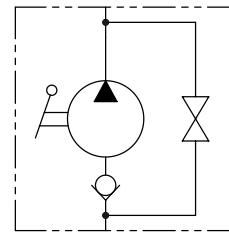
CODICE ORDINAZIONE
ORDERING CODE

01	02	03
PM50		

01	POMPA A MANO DOPPIO POMPAGGIO PER CILINDRO A SEMPLICE EFFETTO DOUBLE PUMPING FOR SINGLE ACTING CYLINDER	PM50
02	OPTIONAL	Senza soffiello Without rubber protection
		Con soffiello With rubber protection
03	OPTIONAL	Senza rubinetto di scarico con valvola di massima Without unloading valve With relief valves
		Senza rubinetto di scarico Without unloading valve
		Con joystick With joystick
		Con leva di scarico Ø 27 mm With unloading lever Ø 1.06 inch
		Con rubinetto di scarico e valvola di massima With drain valve and relief valve

LA POMPA VIENE FORNITA CON LEVA DI AZIONAMENTO L=600 mm
THE PUMP IS SUPPLIED WITH ACTING LEVER 23,6 inch LONG

SCHEMA IDRAULICO / HYDRAULIC CIRCUIT



DATI TECNICI / TECHNICAL DATA

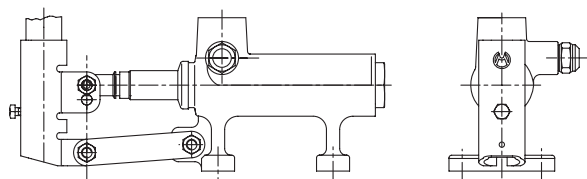
Olio idraulico - Mineral oil	ISO 6743/4 (DIN 51524)
Viscosità olio - Oil viscosity	15-250 mm ² /s (15 to 250 cSt)
Classe di contaminazione max Max contamination index	ISO 4406:1999 Classe 19/17/14
Temperatura dell'olio - Oil temperature	-20°C +80°C -4°F +176°F
Temperatura ambiente - Environment temperature	-20°C +50°C -4°F +122°F

È indispensabile la presenza di un filtro nel circuito idraulico per proteggere la valvola (filtrazione consigliata 15 µm)
A filter into the hydraulic circuit necessary to protect the valve (advised filtration 15 µm)

CARATTERISTICHE TECNICHE / TECHNICAL CHARACTERISTICS

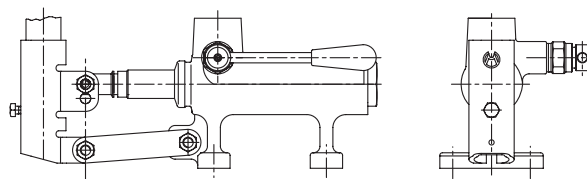
TIPO TYPE	CILINDRATA (cm ³) DISPLACEMENT (in ³)	PRESSIONE OTTIMALE OPTIMAL PRESSURE bar-PSI	PRESSIONE MAX MAX PRESSURE bar-PSI	PESO APPROX APPROX WEIGHT kg-lbt
PM50	50 (3.05)	80 (1160)	280 (4060)	4,2 (9.25)

WRV

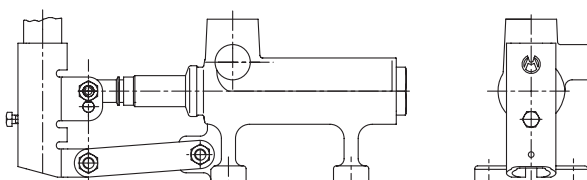


Valvola di massima **Molla 40/350 bar** **Taratura Standard 100 bar**
Relief valve Spring 580/5075 PSI Standard Setting 1450 PSI

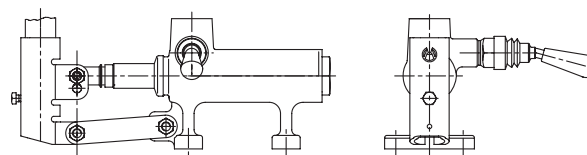
L



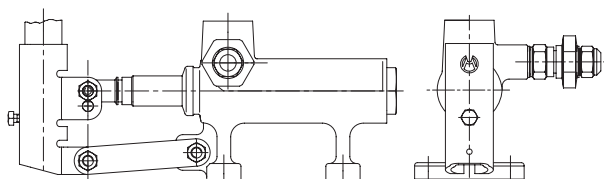
W



J



RRV



SFORZO ESERCITATO ALL'ESTREMITÀ DELLA LEVA
EFFORT OPERATING AT THE END OF THE LEVER

